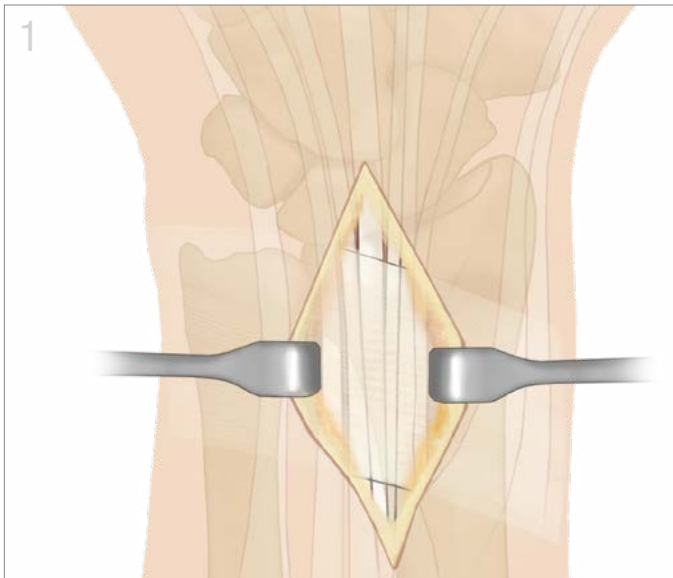




Dorsal Buttress Pin™

Surgical Technique | *TriMed Wrist Fixation System*





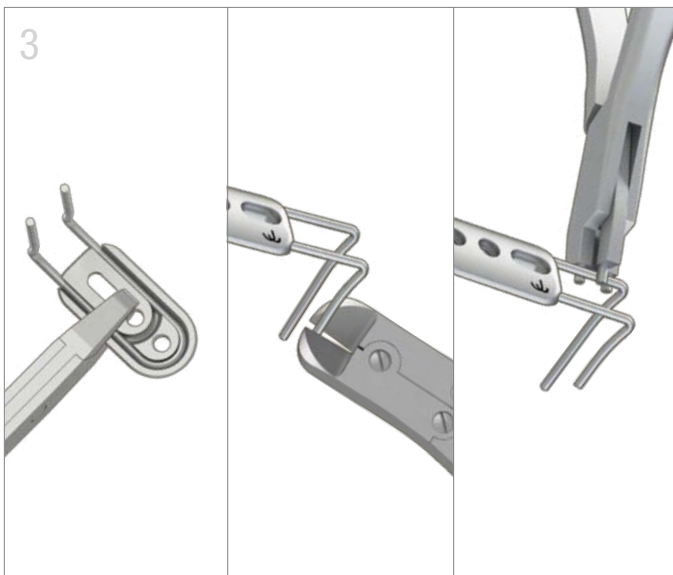
Exposure (limited dorsal approach)

- Make incision over 4th dorsal compartment tendons.
- Develop interval between 3rd and 4th, or 4th and 5th compartments.
- Transpose EPL if needed.
- Expose the dorsal cortex of the distal radius.



Implant Positioning

- Insert two parallel 1.1 mm (0.045") K-wires at the location of desired distal fixation.
- The direction and angle of the K-wires will determine the direction and angle of the Dorsal Buttress Pin legs.



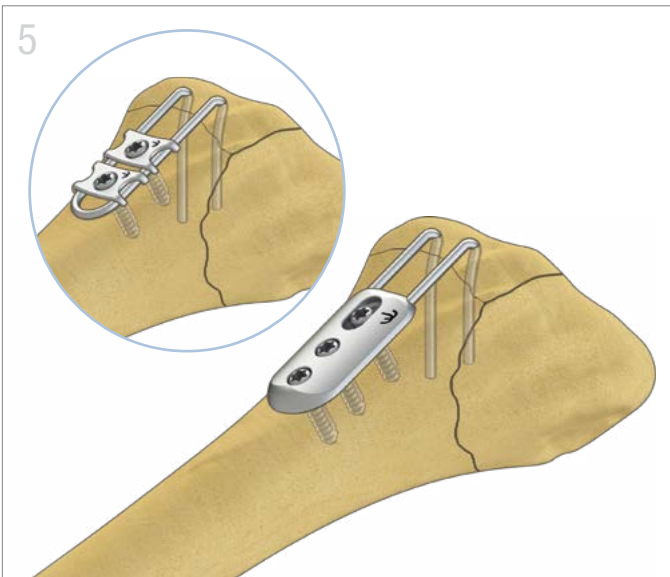
Implant Preparation

- Using a Pin Clamp, snap the Dorsal Buttress Pin into one of two positions on the Wireform Plate.
- Cut legs of the Dorsal Buttress Pin to desired length, leaving one leg slightly longer.
- If needed, alter the width or angle of legs using the Wire Bender.



Implant Insertion

- At the apex of the bend, snap a Pin Clamp onto the longest leg making sure it is axially aligned with the leg.
- Withdraw the K-wire corresponding to the longest leg and immediately insert.
- Switch Pin Clamp to shorter leg and repeat.
- Complete seating of each leg using the Impactor.

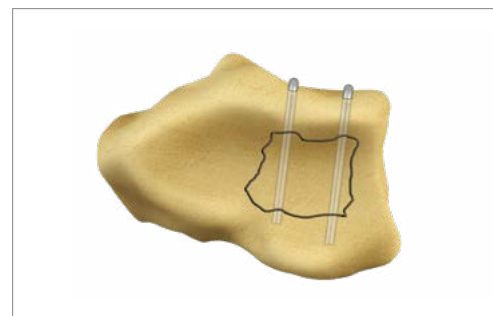


Final Fixation

- Align Dorsal Buttress Pin to the proximal shaft.
- Use the 1.8mm (blue) drill and 2.3mm cortical screws to fix the implant proximally.
- Confirm implant is seated and secure.
- For lowest profile, a standard washer can be used instead of a Wireform Plate.
- Overlay washer and seat screw until washer flexes to ensure fixation of Wireform.

TIPS

- Dorsal Buttress Pin can also be used to directly buttress a free intra-articular (“die punch”) fragment.

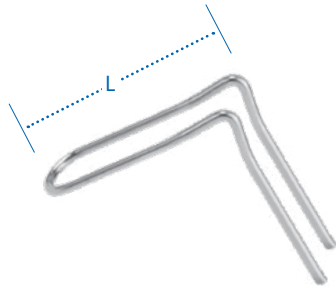


All implants made from surgical grade stainless steel

Dorsal Buttress Pin™

BP27 27mm
BP32 32mm

L = length



Wire Bender

BNDWIR-1.1



Washer and Wire Plate

WASHR 1 Hole
WFP3 3 Hole
WFP5 5 Hole



Pin Clamp

PINCLAMP

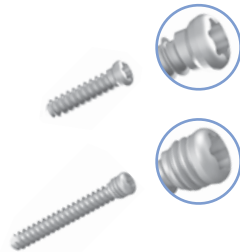


Screws and Pegs

TRX2.3-xx
10mm to 32mm

TPEG-xx
10mm & 12mm*
14mm to 32mm

* Special Order



Impactor

IMPCT



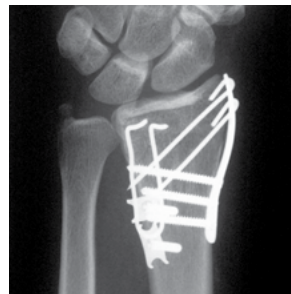
X-RAYS



Pre-Op



Pre-Op



Post-Op



Post-Op



TriMed, Inc. / 27533 Avenue Hopkins / Santa Clarita, CA 91355 USA / 800-633-7221 / www.trimedortho.com

The technique presented is one suggested surgical technique. The decision to use a specific implant and the surgical technique must be based on sound medical judgment by the surgeon that takes into consideration factors such as the circumstances and configuration of the injury.

This document is controlled by TriMed, Inc. When downloaded, printed, and/or copied, this document becomes uncontrolled, and users should always check trimedortho.com for the latest version.

For indications, contraindications, warnings and precautions related to TriMed Wrist Fixation System reference IFU on trimedortho.com/ifu.

See trimedortho.com/patents for all patent information.

CE
1639