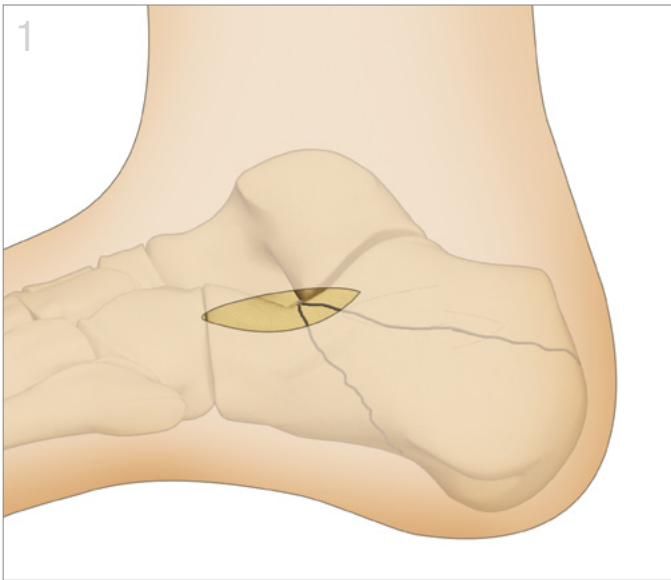


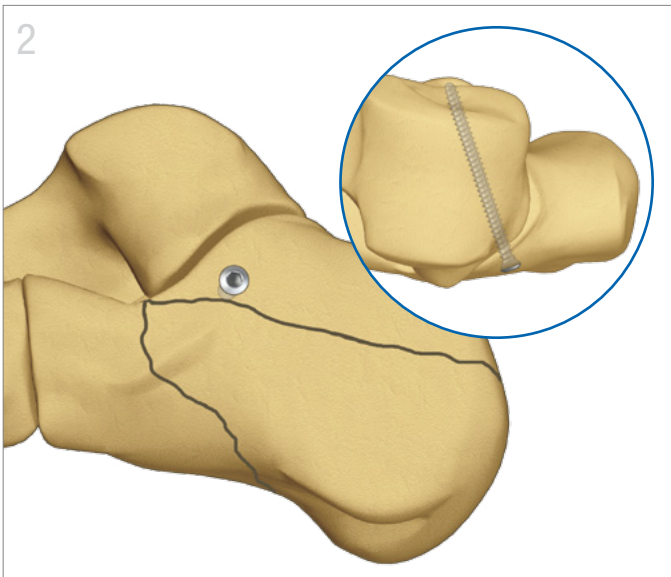
Sinus Tarsi Plate™

Surgical Technique | *Calcaneal Fracture Fixation System™*



Exposure and Reduction

- Expose the calcaneus using a standard sinus tarsi incision 5mm inferior to the distal tip of the fibula towards the 4th metatarsal base.
- Reduce fracture and temporarily fix with pins as needed.



Posterior Facet Stabilization

- After the posterior facet has been reduced, drill using a 2.3mm (red) drill aiming for the sustentaculum. If compression is required, use 3.2mm (white) drill to over-drill the proximal fragment.
- Insert appropriate length 3.2mm screw. If desired, repeat steps above to place a second screw parallel to the first. Confirm screw placement with fluoroscopy.

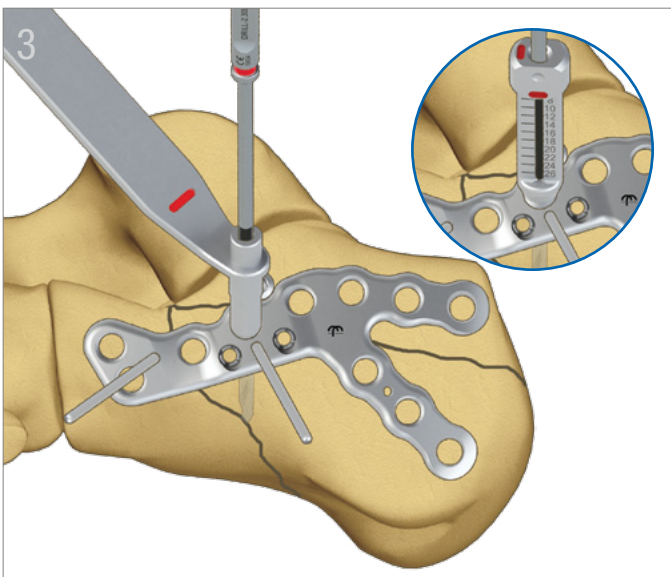
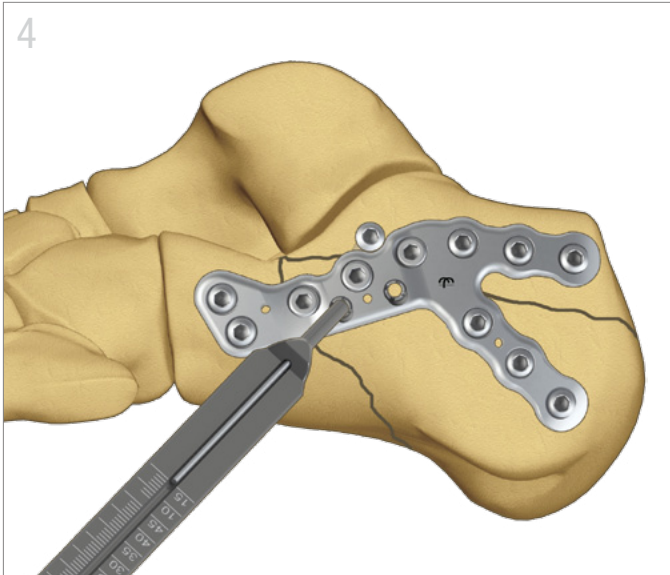


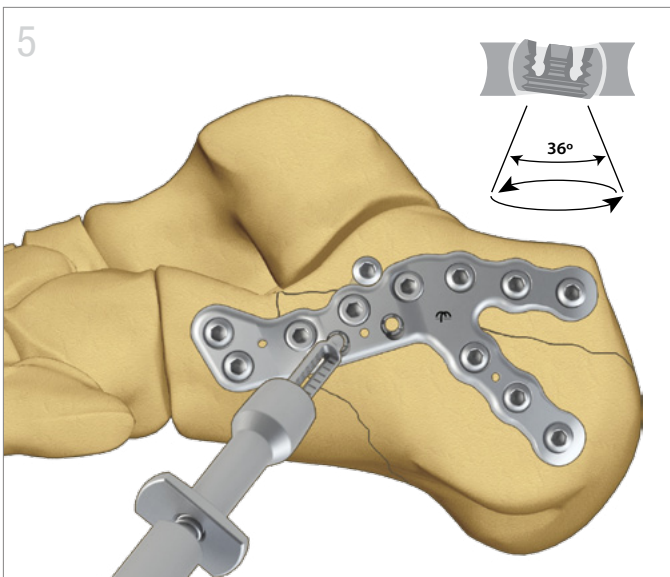
Plate Application

- Use an elevator to separate soft tissue from the lateral calcaneal wall.
- Select appropriately sized one- or two-limb sinus tarsi plate.
- Insert plate and temporarily secure with K-wires. Using the 2.3mm (red) drill, place either locking screws with the screw-in guide (GUIDELCBS-2.3) or non-locking screws with the standard guide (GUIDE-2.3/3.2).



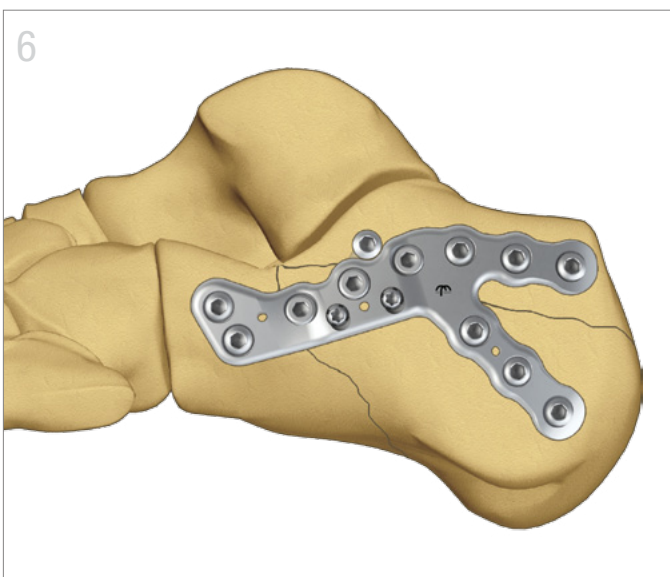
Screw Insertion

- Insert 3.2mm cortical locking or non-locking screws into corresponding screw holes through incision site.
- Use the “perfect circle” freehand technique to make stab incisions to insert remaining screws percutaneously.



Bearing Positioning

- Assemble Peg Guide and Peg Guide Extender and thread guide into bearing.
- Aim guide to desired position between previously placed screws to support the posterior facet. Finger tighten guide to lock. Remove extender handle and insert 1.1mm K-wire to confirm the trajectory of the peg on C-arm.
- Measure appropriate length with wire gauge. Drill over 1.1mm K-wire with 2.1mm cannulated drill (yellow). Remove K-wire. Insert the 2.3mm pegs (up to 36° angulation).

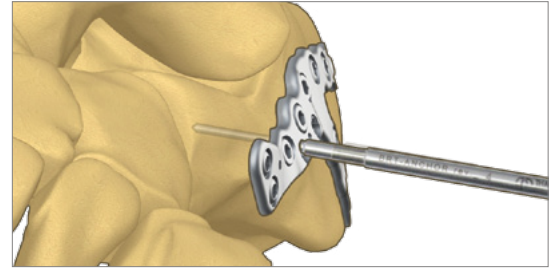


Final Fixation

- Repeat insertion steps above to complete fixation with additional pegs as needed.
- Confirm that all screws and pegs are fully seated prior to closing incision.

TIP

- The Bearing Reduction Tool can be used to re-establish the alignment of the bearings to the drilled holes before inserting the pegs.



Sinus Tarsi Plate

LEFT
CLSL-07
CLSL-08
CLSL-09
CLSL-11

RIGHT
CLSR-07
CLSR-08
CLSR-09
CLSR-11



Drill Guide

GUIDELCBS-2.3
PEG-GUIDE



Peg Extender

PEG-XTNDR



Cortical Screw

HEX3.2-xx
18mm to 54mm



Cortical Locking Screw

LCBS3.2-xx
18mm to 54mm



Smooth Locking Peg

SPEG2.3-xx
24mm to 50mm



Bearing Reduction Tool

BRT



X-RAYS



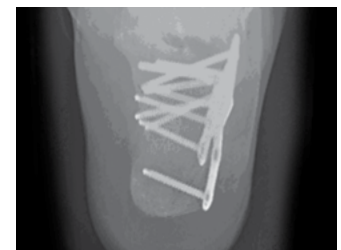
Lateral



AP



Lateral



AP